

Children and Education Scrutiny Sub-Committee



Monday, 28 February 2022 at 4.30 p.m.

**Committee Room One - Town Hall, Mulberry Place, 5 Clove
Crescent, London, E14 2BG**

Supplemental Agenda

This meeting is open to the public to attend.

Further Information

For further information including Membership of this body and public information see the main agenda.

Contact for further enquiries:

Democratic Services,
1st Floor, Town Hall, Mulberry Place, 5 Clove Crescent, E14 2BG
Tel: 020 7364 0842
E-mail: farhana.zia@towerhamlets.gov.uk
Web: <http://www.towerhamlets.gov.uk>

Scan this code for an
electronic agenda:



London Borough of Tower Hamlets

Children and Education Scrutiny Sub-Committee

Monday, 28 February 2022

4.30 p.m.

**PAGE
NUMBER(S)**

4 .2 Special Education Needs and Disability

3 - 32



TOWER HAMLETS



North East London
Clinical Commissioning Group



Response to Tower Hamlets Local Area SEND Inspection

Page 3

Children and Education Scrutiny Sub-Committee
February 28th 2022

Agenda Item 4.2



Our Commitment

- Leaders in Tower Hamlets are committed to delivering improvement for our children, young people and families.
- In Autumn 2020 we took stock of the severe impact of the pandemic and we reaffirmed SEND as a core and a higher priority for the Council, for the CCG and for our partners.
- We continue to increase investment in this key area as demand exceeds resources available.
- Inspectors have described our self-evaluation as accurate, clear and honest giving us confidence we know what needs to be done.

Page 4



Local Area Inspection



TOWER HAMLETS



North East London
Clinical Commissioning Group

- Took place from the 28th June to the 2nd July 2021
- Undertaken jointly by Ofsted and the Care Quality Commission (CQC).
- Inspectors met with staff from across the local area who have responsibility for SEND.
- Parent surveys were collected and inspectors met with a number of parent groups and young people.
- Inspectors visited a selection of schools and settings.
- Outcome was that the Local Area had to produce a Written Statement of Action



Inspection Findings – system strengths

- Pace of improvement has accelerated since 2018 – notable that we have been able to maintain this through the pandemic.
- Children with SEND achieve well at school and young people are supported into employment.
- Good support to schools and early years providers for children with SEND.
- Parents and young people are involved in strategic meetings and influence decision making.
- Therapists and mental health professionals measure the effectiveness of their work with individual children and young people.
- Many services are highly regarded including SENDIASS, Behaviour and Attendance and the Sensory Service.



Inspection Findings – areas of weakness

Written Statement of Action required in respect of 4 areas:

- **Quality and oversight of EHC Plans including the annual review process**
- **ASD assessment and diagnosis waiting times**
- **Speech and language provision**
- **Communication between area leaders and parents**



Written Statement of Action



- Senior leaders accept the findings within the inspection letter and have redoubled their commitment to improvement.
- Our existing improvement plan covers most of the weaknesses identified and is reviewed regularly by the SEND Improvement Board to ensure progress is made.
- We have ensured synergy between our ongoing Improvement Plan and the WSoA.
- We welcome external challenge and support, and want to ensure maximum impact from improvement partners.
- The WSoA was submitted by 24th December 2021 deadline to the Department of Education and NHS England.



Written Statement of Action



TOWER HAMLETS



North East London
Clinical Commissioning Group

- The LA received confirmation on the 6th January 2022 that the WSoA was 'deemed fit for purpose' in setting out how the Local Area will tackle the significant weaknesses identified in the published inspection letter.
- WSoA is published on the Local Offer ([SEND Written Statement of Action \(localoffertowerhamlets.co.uk\)](https://localoffertowerhamlets.co.uk)) and is monitored by the SEND Improvement Board.
- Other areas of improvement to the SEND system remain within the SEND Improvement Plan.



Education Health and Care Plans

Objective: *Improve the quality and oversight of EHC plans including the annual review process.*

- EHC Needs Assessments and Annual Reviews have clear monitoring and tracking in place to ensure all statutory deadlines are met; and the Recovery Plan is completed in respect of all out of date assessments.
- Increase capacity of the SEN Service to ensure that Annual Reviews are monitored and processed according to statutory timescales.
- Develop internal EHCP Quality Assurance processes, including annual reviews, involving all stakeholders and partners to ensure quality continues to improve in line with the best examples seen in the inspection process.
- Set up a co-production pilot to ensure that the experiences of parents and young people input into SEN processes and improvement work.
- Improve the phase transfer process to ensure that all children and young people moving to their next stage of education have updated EHCPs, informed by a co-produced annual review, with clear Preparation for Adulthood (PfA) outcomes where required.
- Monthly reporting of EHCP performance and quality; accountability to the SEND Improvement Board; Children & Families Executive; and Health & Wellbeing Board.



Autistic Spectrum Disorder

Objective: *Reduce waiting times for ASD assessment and to review & improve the full holistic pathway for children and families pre, during and post diagnosis*

- CCG have invested an additional £278k over two years to support the ASDAS to increase capacity to complete assessments backlog and reduce the overall waiting times for children and families which were greatly impacted by Covid-19 pandemic.
- Barts Health have submitted a 'recovery plan' set over two years utilising the additional investment to bring the waiting time for assessment inline with NICE guidance.
- ASD Pathway Review Group will have oversight of the delivery of the recovery plan and report back.
- ASD Pathway Review Group has two subgroups and includes parent representatives:
 - **Subgroup 1 - ASD Assessment Timeliness and Diagnostic Pathway:** focus on streamlining processes within a revised pathway which parents, families and professionals can clearly understand.
 - **Subgroup 2 – Family Support Pre/Post Diagnosis:** Map existing support across all agencies, highlighting gaps and artificial barriers to families receiving support, then fill gaps, remove barriers and communicate clearly with families how to access support.



Speech and Language Therapy Commissioning

Objective: *Design and implement an integrated commissioning model for therapies across the local area and to increase SLT provision to ensure the existing in gap for children aged 3-5 is resourced to ensure they are able to receive an intervention when a need is identified*

- Children's Integrated Therapy Steering Group (CIT) is tasked with producing a systemwide commissioning model across all therapies (SALT, OT, OH), which will either pool or align TH/CCG budgets to commissioning joined up therapy provision within a 0-25 integrated pathway.
- The focus of the model to date is to identify and intervene at an earlier stage to ensure children receive the right support at the right time and to reduce acuity of needs by the time children enter statutory school age.
- A strand of the group has been expedited for immediate attention, this being the gap in service for children aged 3-5, where currently there is not formal commissioned service to carry out an intervention.
- An initial business case has been considered by TH/CCG which would meet the identified gap. The second iteration of the business case will focus on ensuring parent and families agree with the model(s) to address the gap, the projected impact is modelled into the entire therapies pathway and to ensure the resourcing is commensurate with the principles of the CIT to drive an integrated model with Health, Education and Early Years services.



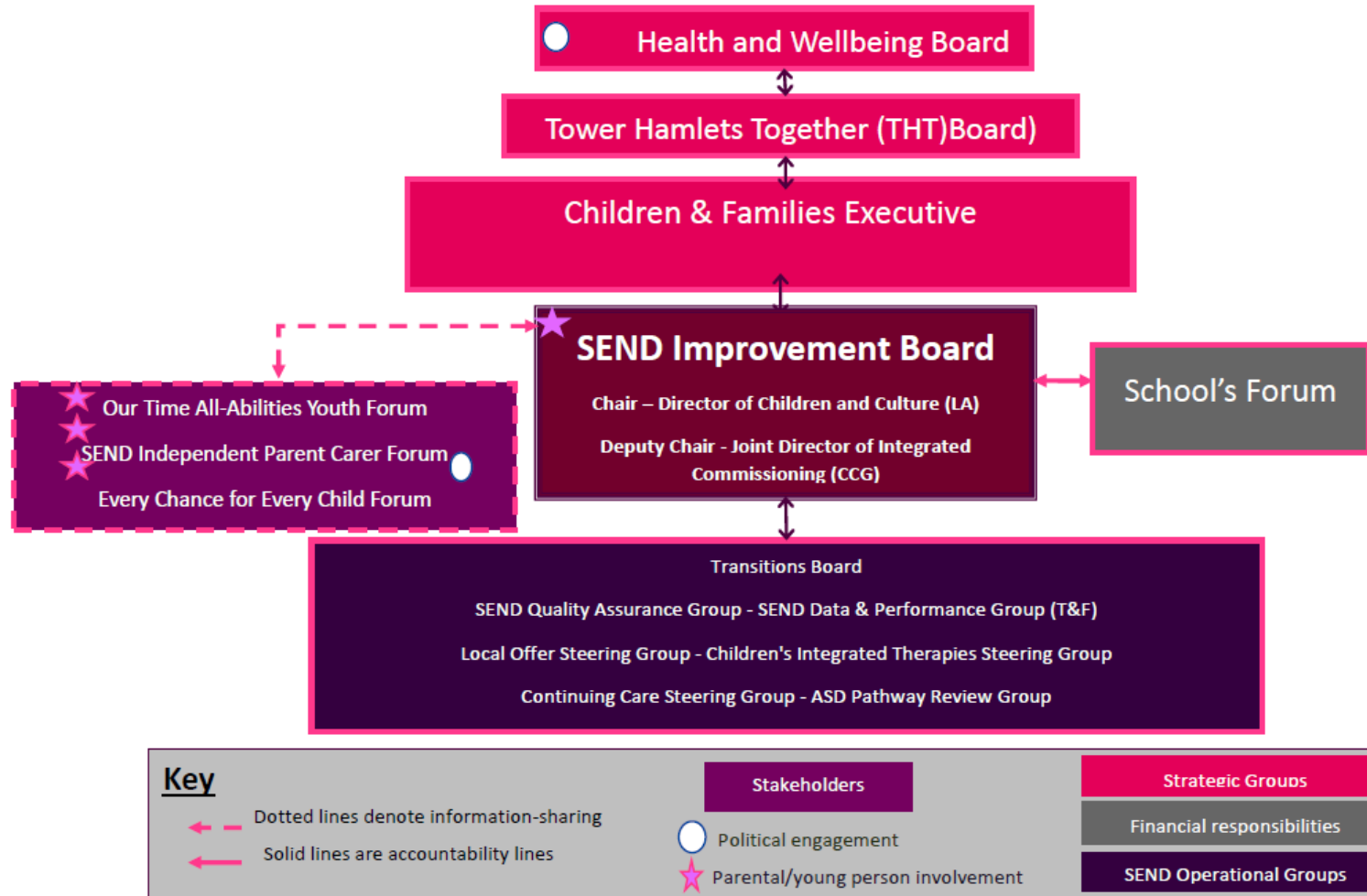
Communication between parents and area leaders

Objective: to develop and co-produce a Parent Engagement strategy across the local area

- A clear communication strategy which encompasses the Local Offer, social media, *Let's Talk SEND*, SEND Newsletter (with *spotlight* contributions from parents/carers) and parents/carers' 'evenings' for children at key transition points.
- Termly *Let's Talk SEND* listening events (with Director of Education, DMO, DCO, PCF, PFSS, SENDIASS) with parents/carers, children and young people to continuously update them on services available and provide progress reports on the local area's strategic plans
- SEND champions promote key messages on the local area's improvement activities and provide feedback on service delivery and the 'lived experiences' of families
- Progress of engagement activities captured through 'You said - We did', are shared with parents/carers at least quarterly/termly
- Regular reports and feedback to parents from the SEND Improvement Board to include progress on the areas for development in the Written Statement of Action (WSOA)



Governance and Accountability



SEND Improvement Board



TOWER HAMLETS



North East London
Clinical Commissioning Group



Accountability

- Progress on the actions in the Written Statement of Action are being reported to the SEND Improvement Board
- Local Area leaders will meet regularly with the DfE and NHSE, informally and formally, to update on progress. Formal meetings will take place every six months.
- A new inspection framework is being introduced and this means that the Local Area will next be inspected under the new inspection framework and will not be subject to a revisit under the current inspection framework.





OUR TIME ALL ABILITY YOUTH FORUM TOWER HAMLETS

We are run for and by young
people, 14 – 25, with special
educational needs and disabilities

Page 18



We have achieved the following:

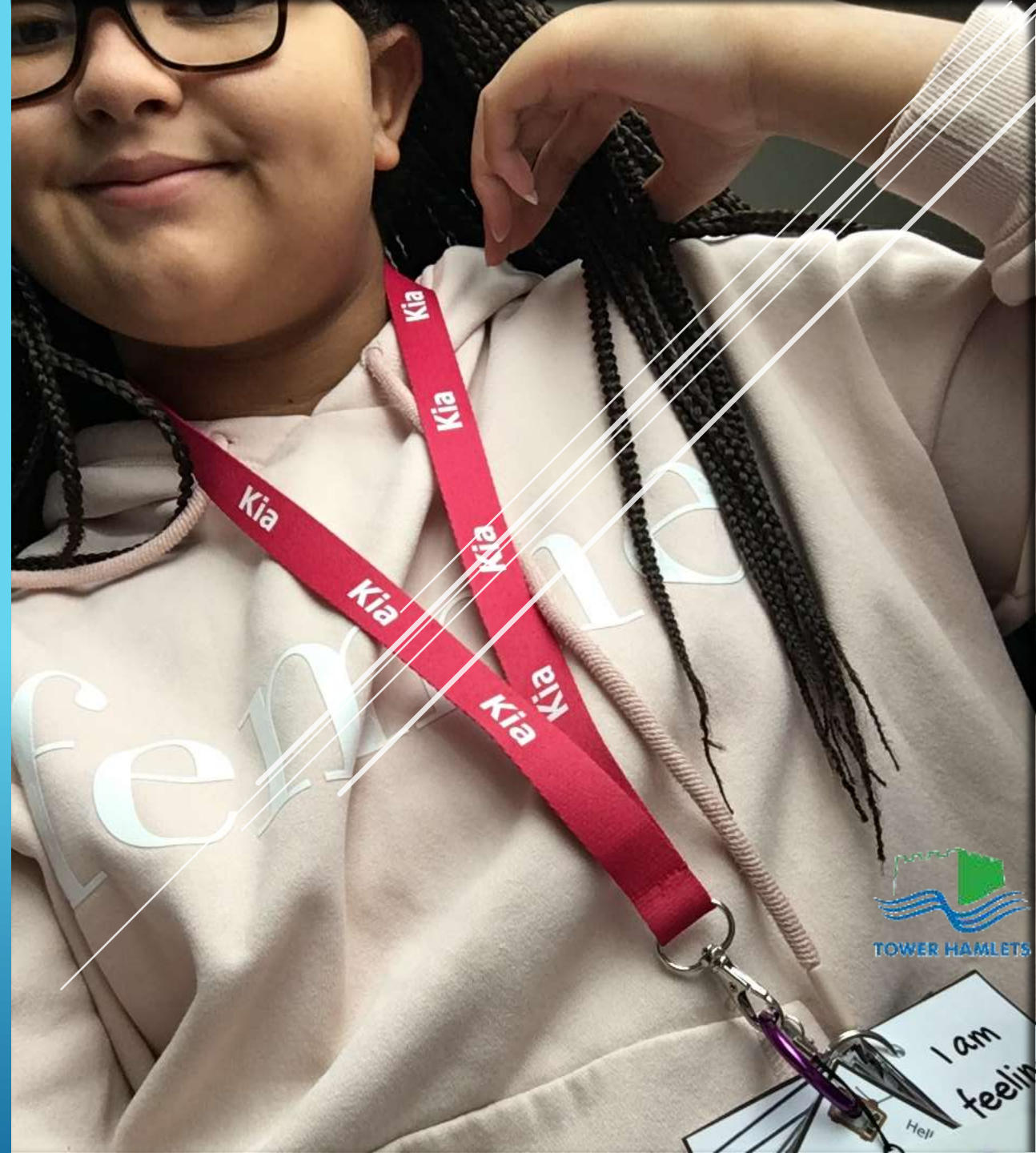
- Run a peer research project
- Participated in National SEND Conference
- Completed an ASDAN Leadership Course
- Given presentations at staff events
- Made art and poems with the A-Team Arts Service
- Organised Events
- Taken part in Local Consultations
- Run our kitchen cooking club

- Mental Health Champions
- Run workshops and given talks in schools and colleges
- Attended Stakeholder meetings
- Workshop at National CDC (Council for disabled children) participation conference
- Working with Spotlight SEND Superheroes
- Presentation to LA children and culture staff
- Representation on the CDC national steering group
- Made films based on Autism, EHCP, personal budgets and training education psychologists

WE EMPOWER
AND INSPIRE

Page 21

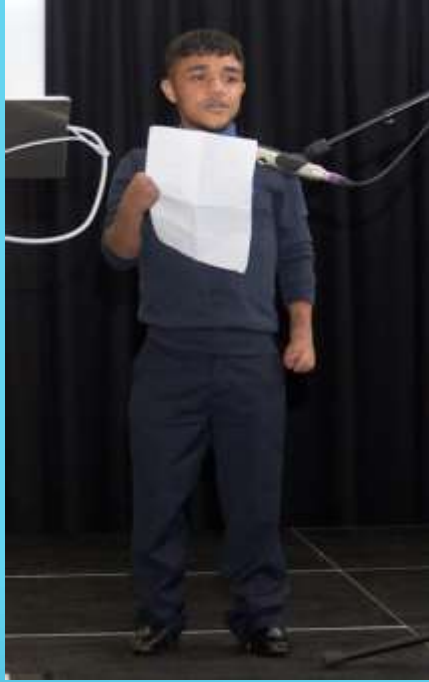
WE SUPPORT
OTHERS TO GROW



NEXT STEPS FOR OUR TIME ARE:

- Meet with the Mayor Of London regarding PAN London
- Secure funding to develop the scope and reach of the group
- Visit the Houses of Parliament
- Further develop the Young People Zone on the Local Offer
- Mystery Shopping Services
- Independence for SEND
- Parents views on SEND
- Continue to recruit new members and spread SEND awareness
- Support to promote anti-bullying in order to increase inclusion rates
- Guide young people with SEND towards becoming independent

Abadur Rahman



If you come to the youth forum you will feel welcome, you won't feel left out, and you'll get your voice heard.

Page 23

We all understand the same feelings that we're all going through. We know we're not the only young people with additional needs. There are lots of people like us all over the country. So you are not alone.

Aklakur Rahman



Lydia Anderson



We do lots of things at the forum. We make films, we plan what to do, we do all different projects and we have events. We tell people what we want and what will help us.

Ruhul Amin



The youth forum is a great opportunity. Use this opportunity while you can. Come and get involved in all the different activities that we do.

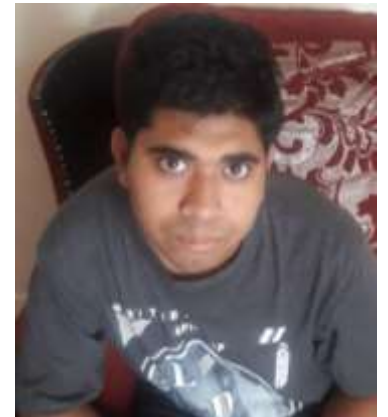


WE:

- COOK
- CAMPAIGN
- FUNDRAISE
- MAKE FILMS

WE:

- WRITE POEMS
- MAKE ART
- WORK WITH PROFESSIONALS
- REPRESENTING YOUNG PEOPLE
- CONSULT





WE GIVE A VOICE TO YOUNG PEOPLE

Front

Back



ASD Cards
designed
by Our Time
members

Young People's SEND Ambassador Programme



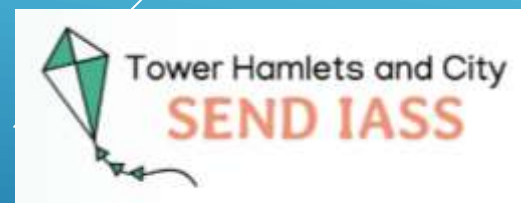
SEND Ambassadors
are young people with
additional needs who
want to keep all young
people with SEND:

**Informed, Consulted
and Included**

**If you are interested in YP
Ambassadors running a session or
becoming a Young Person's SEND
Ambassador yourself then please
contact us**

**Email: ypambassadors@gmail.com
pac@towerhamlets.gov.uk
Tel: 020 7364 6481**

YP SEND Ambassadors working together
to make changes for young people in
Tower Hamlets are supported by Parent
and Family Support Service (PFSS)



What support does Our Time need?

- Others to support for promoting Our Time for recruiting more young people with SEND
- Funding for Young People's Forum work
- Employment opportunities for young people with SEND to work for Tower Hamlets Council
- Finding possible funding options to employ young people with SEND as a youth worker or a mentor

- ▶ Please get in touch and come along to our next Wednesday meeting
- ▶ 020 7364 6489
- ▶ https://www.localoffertowerhamlets.co.uk/young_peoples_zone
- ▶ Ourtime.yf@gmail.com
- ▶ Facebook.com/ourtime.yf
- ▶ Twitter.com/ourtime14
- ▶ instagram.com/ourtime_yf

**Our
Time**

Every star is different



This page is intentionally left blank